

Ipswich, Suffolk, IP9

Quickmove
PROPERTIES



Price as listed

 x 2

 x 2

This brand new, modern-furnished Prestige Sonnett (40'x20') luxury park home is perfect for those looking for a detached, easy-to-maintain, bungalow-style property. The home has a modern, spacious kitchen with integrated appliances, a comfortable living and dining area, the master bedroom has a walk-in wardrobe and an en suite, there is a second double bedroom and a bathroom.

Located on the Shotley Peninsula, this park is beautifully designed to take advantage of the surrounding area, it also has direct private pedestrian access to Shotley Marina and the River Orwell coastal path. The local area, all within an Area of Natural Beauty, is known as a 'boating paradise'; you're just a short drive away from Shotley Marina or the nearby sailing club. The park is in Shotley Gate, a small parish right on the coast, with a marina and a pier. Ipswich is a short drive from the development and the nearest large town.

Age restriction: Over 50s

Pet friendly: Yes

Site fees (at time of listing): £309.75 per month

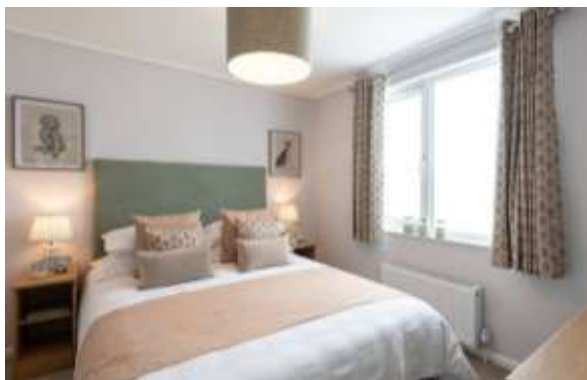
Residential license

House to sell?

Hassle-free Property Part-Exchange is available from Quickmove Properties, with no estate agent fees, no solicitor's fees and no market uncertainty.

Key Features

- Brand new home
- Coastal Location
- Countryside location
- Gated and secure community
- Over 45s
- Pet friendly
- Two bedrooms
- Up to 100% part exchange available
- Modern design
- Brand new home



CONTACT US

01793 840917

advice@quickmoveproperties.co.uk

Quickmove
PROPERTIES

