

Woolacombe, Devon, EX34



Price as listed



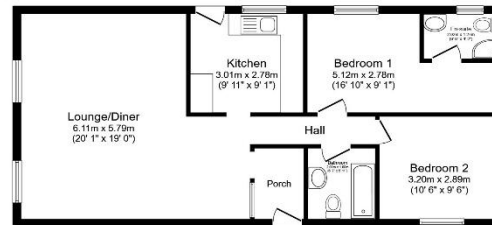
This pre-owned Willerby Kingswood (40'x20') park home is perfect for those looking for a detached, easy to maintain, bungalow-style property in a modern secluded development. The home features a modern kitchen, a comfortable living area, two double bedrooms, an en suite and a bathroom. The home also has an enclosed, easy-to-maintain garden.

Set in the rolling hills of North Devon, this modern and welcoming residential park for the over 45s is a short drive from Woolacombe Bay. A bus stop is located just outside of the park, providing great transport links to the surrounding area. The village of Woolacombe is just a short walk away, there you can find your local amenities as well as pubs, restaurants, and leisure activities.

Age restriction: Over 45s  
 Site fees: £297 per month  
 Residential license

### Key Features

- Coastal Location
- Community Living
- Countryside Walks
- Far reaching views
- Over 45s
- Part Exchange Available
- Pre-owned park home
- Residential Development
- Two Bedrooms



Total floor area 73.5 sq.m. (791 sq.ft.) approx  
 This floor plan is for illustrative purposes only. It is not drawn to scale. Any measurements, floor areas (including any total floor area), openings and orientation are approximate. No details are guaranteed. They cannot be relied upon for any purpose and they do not form part of any agreement. No liability is taken for any error, omission or misstatement. A party must rely upon its own inspection(s). Powered by [www.houseagent.com](http://www.houseagent.com)



**House to sell?**  
 Hassle-free Property Part-Exchange is available from Quickmove Properties, with no estate agent fees, no solicitor's fees and no market uncertainty.

### CONTACT US

01793 840917

[advice@quickmoveproperties.co.uk](mailto:advice@quickmoveproperties.co.uk)

