

£175,000



1 Reeds Close, Willow Park, Moor Lane, Calverton, Nottinghamshire

A brand new 2-bedroom, fully furnished Stately-Albion Park Home offering bright and spacious living set in a tranquil location



Property Features

- ◇ Open plan kitchen/diner complete with fully integrated appliances
- ◇ French doors from the dining room leading out to the garden and decking for outdoor entertaining
- ◇ Separate utility room with integrated appliances
- ◇ Generous lounge with electric fire place and floor-to-ceiling windows
- ◇ Large master suite with en-suite shower room and walk-in wardrobe
- ◇ Double second bedroom with fitted wardrobes
- ◇ Contemporary bathroom with feature wall
- ◇ Driveway parking for two cars
- ◇ CanExel exterior cladding for easy maintenance
- ◇ Gas central heating
- ◇ Triple glazed windows

Location

Willow Park is located in Calverton, which is conveniently situated between Nottingham, Mansfield and the market town of Newark-upon-Trent, offering a wealth of history and museums including its impressive 12th century castle. Sitting between a beautiful golf course and stunning British countryside, the Park provides the perfect environment to live or retire for people over 45. The village has all the amenities required as well as several pubs and restaurants. Nottingham city centre is only 10 miles away with a regular bus service stopping right outside the park.





Utilities

Council Tax: Band A
(Gedling Borough Council)

Pitch Fee: £140.89 p/month (2019)

Gas: Calor LPG
Each home is installed with a tank

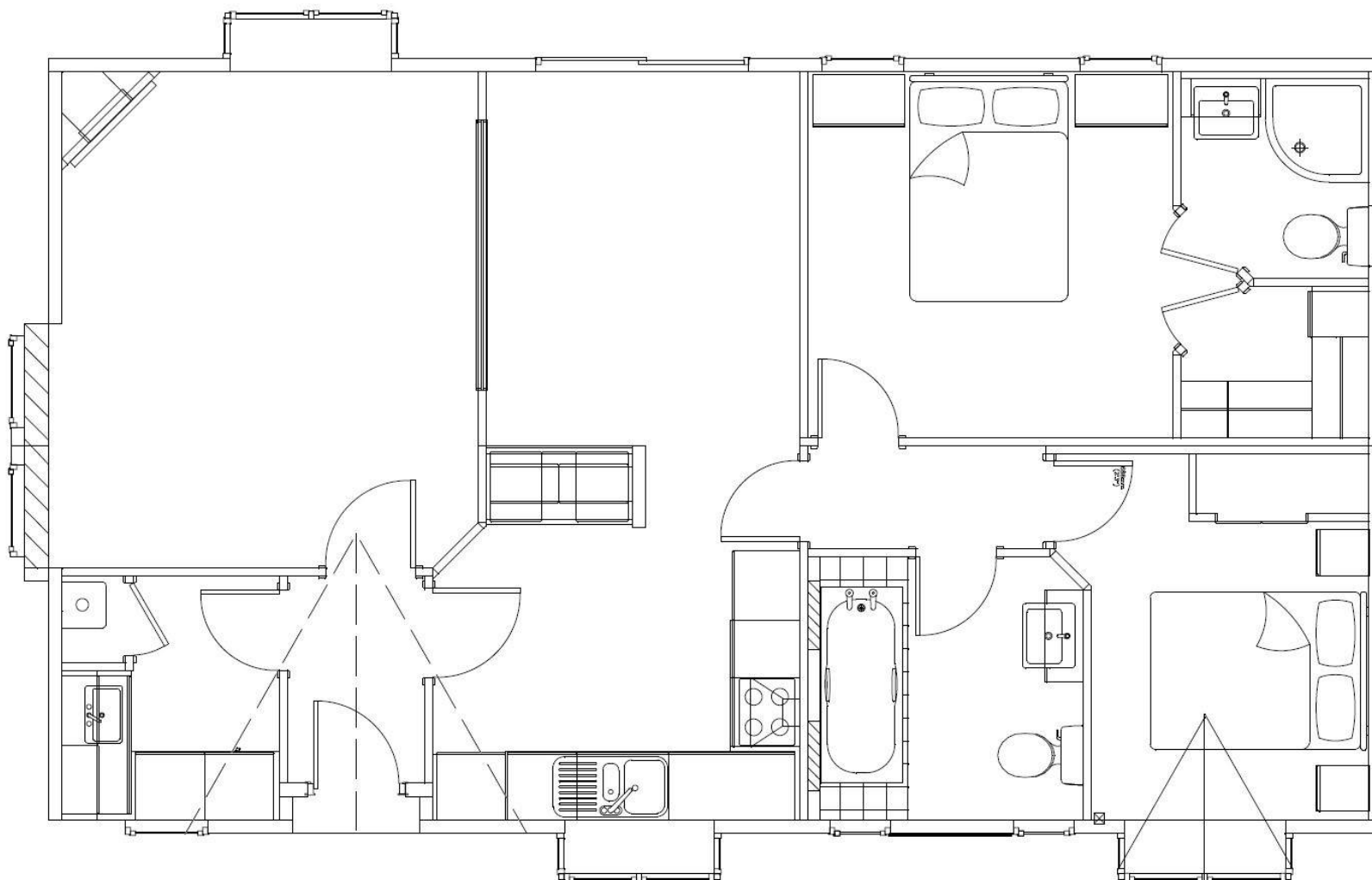
Water: All homes are metered by Killarney Homes and billed to residents biannually

Electric: Homes are metered by Killarney Homes and billed to residents quarterly

FLOORPLAN

STALEY ALBION WOBURN 38 x 22

INTERNAL AREA = 836 ft² / 77 m²



Further details can be found online at www.killarneyhomes.co.uk

To arrange a viewing please contact us on 0115 9652426 or email sales@killarneyhomes.co.uk